

An aerial photograph of a wind farm. In the foreground, there are vibrant yellow and green tulip fields. A road runs through the fields. In the middle ground, a large white wind turbine stands prominently. To the right, a series of smaller wind turbines are visible, receding into the distance. The background shows a vast blue sea under a clear blue sky. The RWE logo is in the top right, and the slogan is on the left.

**RWE**

**Powering  
a sustainable future.**

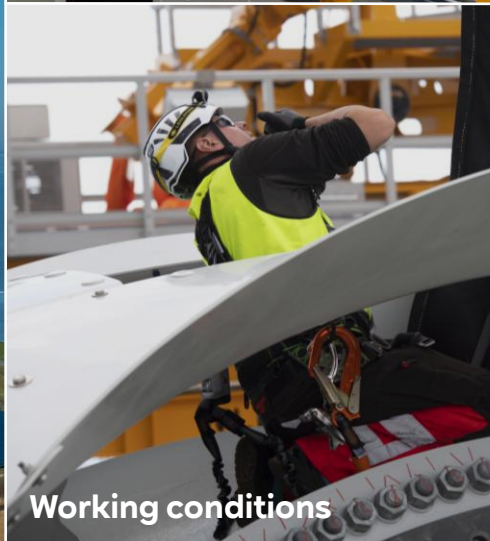
**We drive the energy transition with sustainable investments while improving our impact on key sustainability issues.**



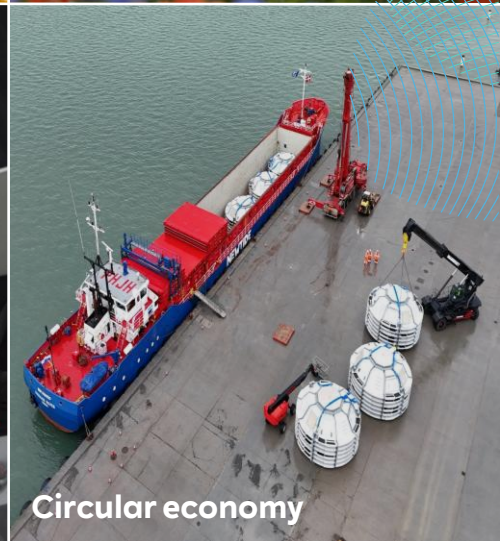
**Climate**



**Biodiversity**

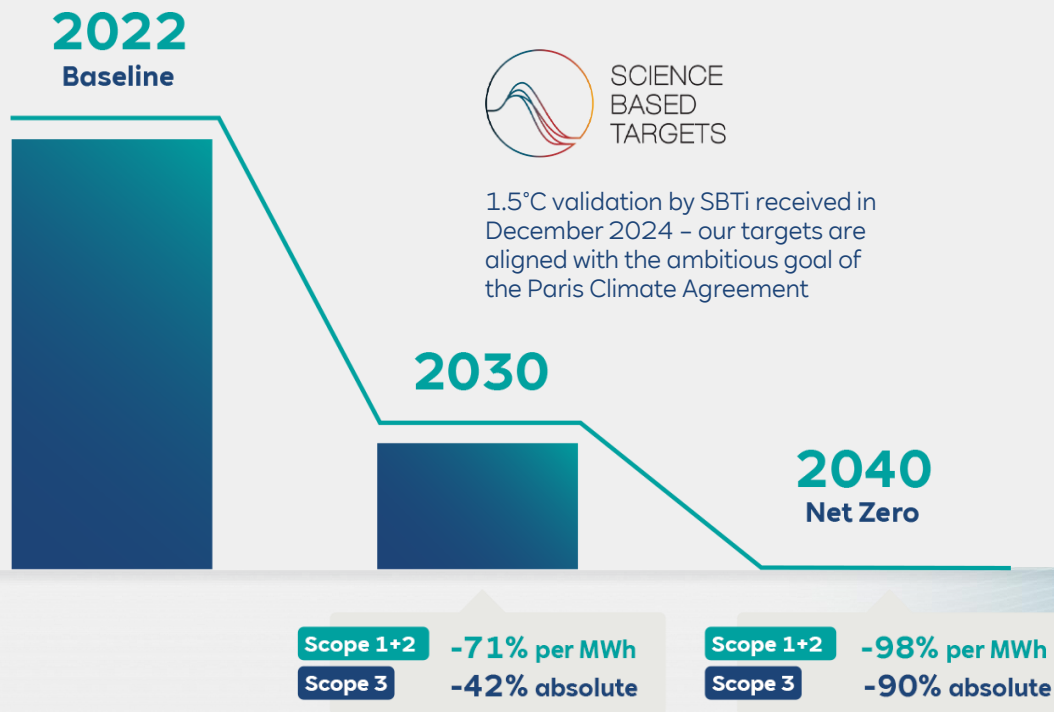


**Working conditions**



**Circular economy**

# Comprehensive, ambitious climate targets guide our actions.



## Scope 1

Operations-related direct GHG emissions

## Scope 2

Operations-related indirect GHG emissions from generation of acquired and consumed electricity

## Scope 3

Up- and downstream indirect GHG emissions from value chain



# We prioritise mitigation measures in our climate action approach.



**Complete coal exit**



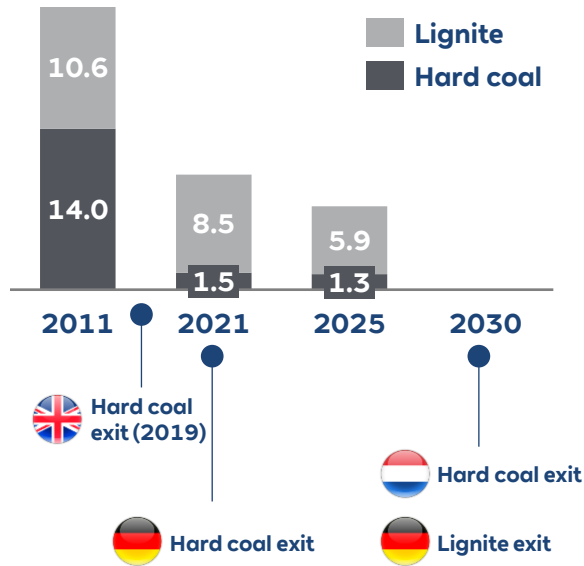
**Expand renewable energy capacity**



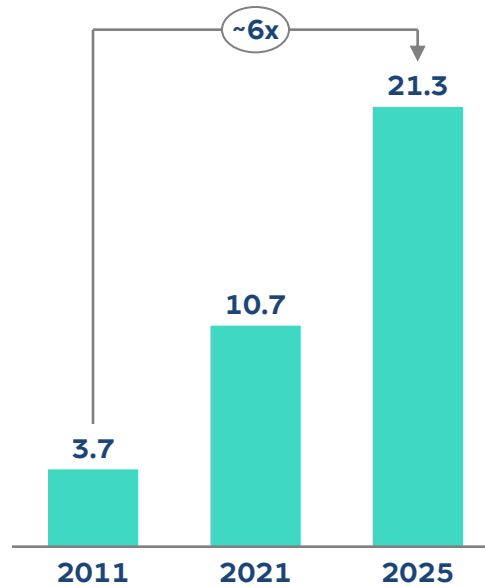
**Reduce indirect emissions**

# We are transitioning from coal-based generation to renewables, while cutting emissions.

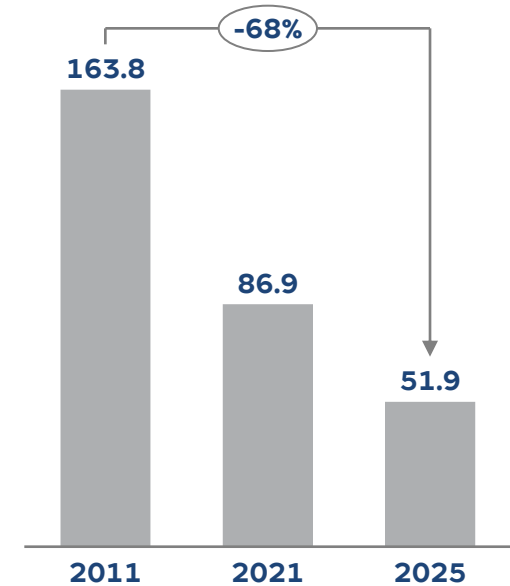
## Installed coal capacity (GW)



## Installed renewable capacity (GW)



## Scope 1 emissions (MtCO<sub>2</sub>e)



Figures are presented on accounting view. Hard coal figures for 2011 include contracted capacities

# Through innovation, we are scaling up the low-carbon energy system of the future.

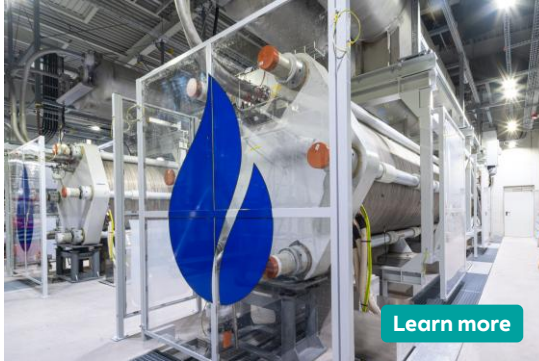
Supporting grid stability and renewables integration with **battery storage**



**Building Germany's largest storage system** (400 MW/700 MWh), and **Australia's first eight-hour system** (50 MW/400 MWh)

**Operating an ultra-fast system** (7.5 MW/11MWh) in the Netherlands

Developing hydrogen-ready gas-fired power plants and **expanding electrolysis capacity.**



[Learn more](#)

**In 2026, we will commission a 34 MW H<sub>2</sub>-ready turbine and 100 MW electrolyser in Lingen**, building out to 300 MW by 2027

**From 2030 to 2044, we will supply 30,000 tons of green hydrogen** annually to TotalEnergies

**Enabling R&D in nuclear fusion** by providing our former nuclear power assets as infrastructure



Partnered with Focused Energy **to develop a laser fusion campus at our Biblis site**

Partnered with Proxima Fusion, State of Bavaria, and Max Planck Institute **to develop Europe's first fusion plant at our Gundremmingen site**

# We assess the lifecycle of our energy portfolio, and engage with the market to source sustainable solutions

Adopting **product design optimisations** to decrease material intensity

**Soft-spot onshore foundations in Spain and France** reduce concrete use by 20%, and steel by 11%

**Hybrid onshore towers in Germany combine steel and low-carbon concrete** (~50% lower CO<sub>2</sub> emissions)



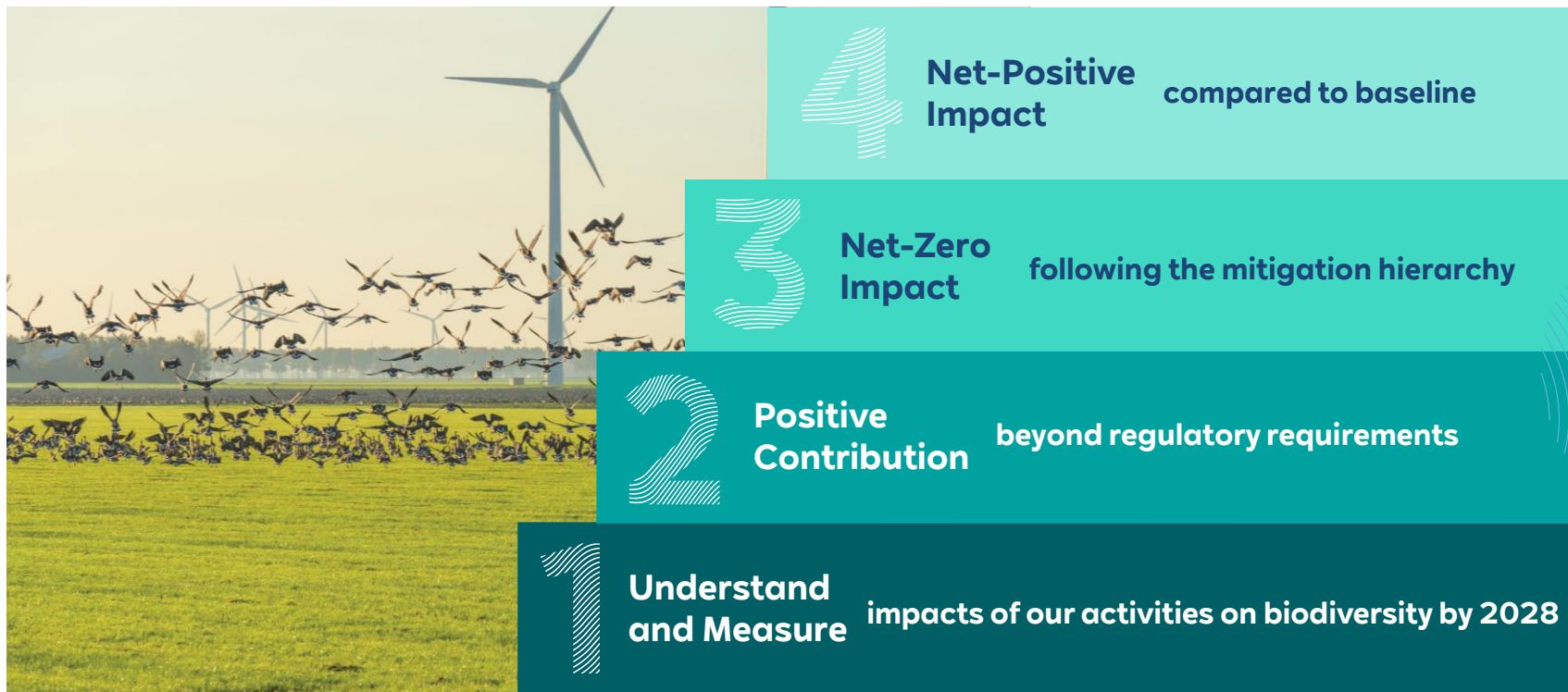
Pioneering offtake of **low-carbon materials**

**1<sup>st</sup> developer worldwide** to use Siemens Gamesa's GreenerTowers

**Greener steel at Thor offshore wind farm** with an average of 63% lower CO<sub>2</sub> emissions



# For new assets we aim to achieve a net-positive impact on biodiversity.



# We have enhanced biodiversity in the Rhenish lignite area through recultivation and applied research.

**234 km<sup>2</sup>**  
of opencast mines  
restored to farmland and  
woodlands.



**50 landscape  
lakes** created



**~3,400 animal species**  
identified



**~1,500 plants and  
fungi species** identified

[Learn more](#)

# We seek opportunities to enhance biodiversity at our sites through a combination of various proven measures.

Since 2025, we aim to achieve an average of 5x the national net biodiversity gain target (i.e. 50%) for our solar farms in the UK

Our Cotmoor solar farm will achieve

**65%** biodiversity net gain



**Wildflower meadows**



**Wildlife shelters**



**Small mammals access gates**



**Rewilding zones**

[Learn more](#)

# We are implementing cutting-edge technologies to protect ecosystems and understand our impacts

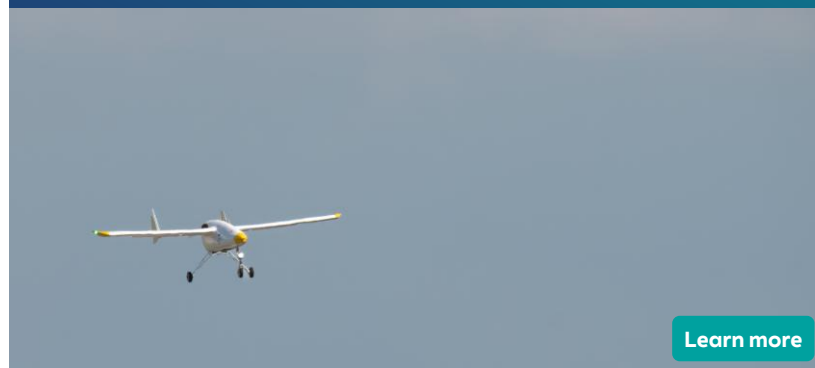
## Nature-inclusive engineering solutions at offshore wind farms

**ARC marine's Reef cubes®**, made from low-carbon concrete, **create refuge for marine species while protecting turbine foundations** from seabed erosion.

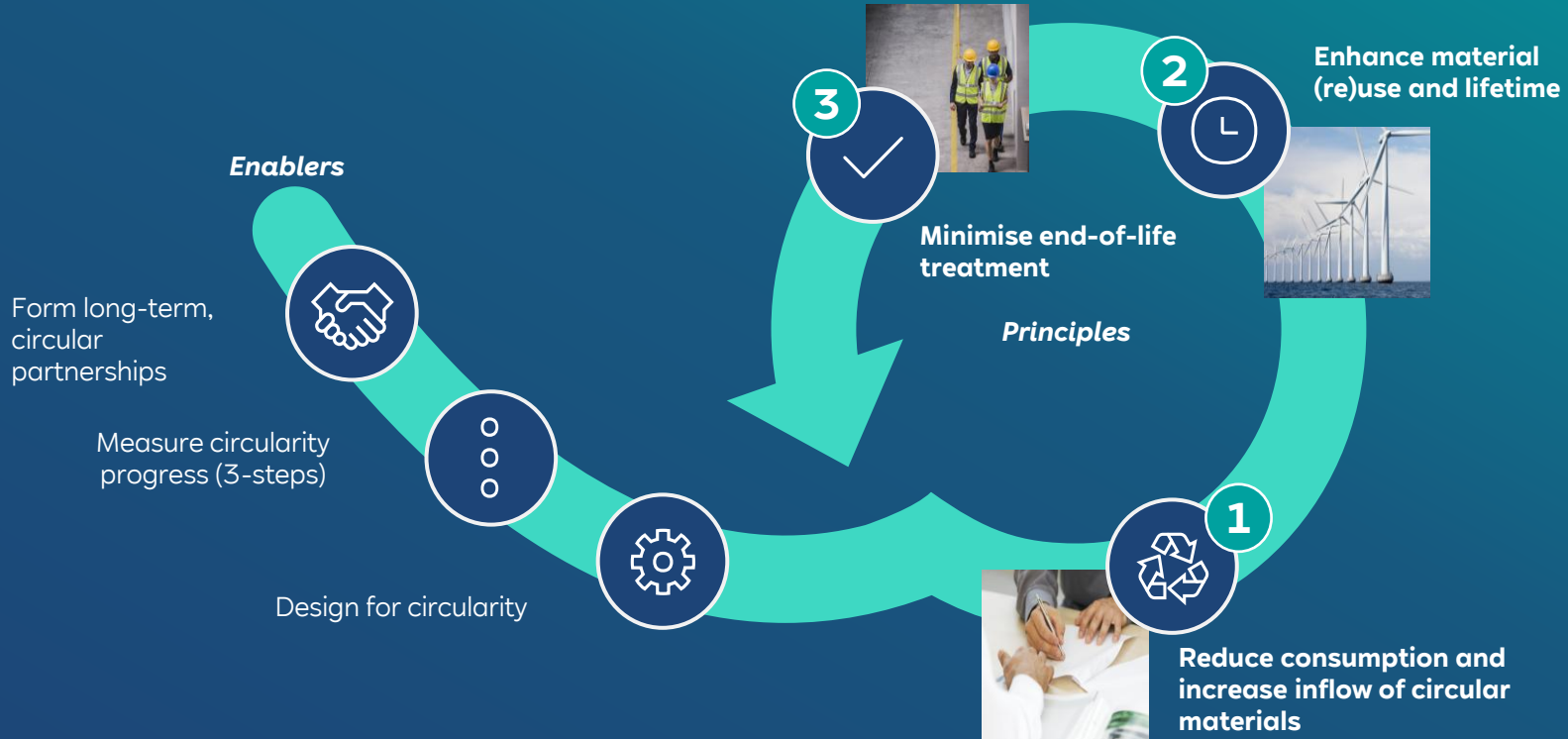


## Non-invasive techniques for marine monitoring

AI-based drones, underwater cameras, eDNA samples, and autonomous underwater vehicles **enable comprehensive environmental assessment.**



# Our goal is to transform business operations to be fully circular by 2050.



# We implement circular practices to avoid waste and reintegrate materials into the value chain

## Extending the lifecycle of assets by prioritising refurbishment

During offshore overhauls, **75% of procured components were refurbished** instead of new

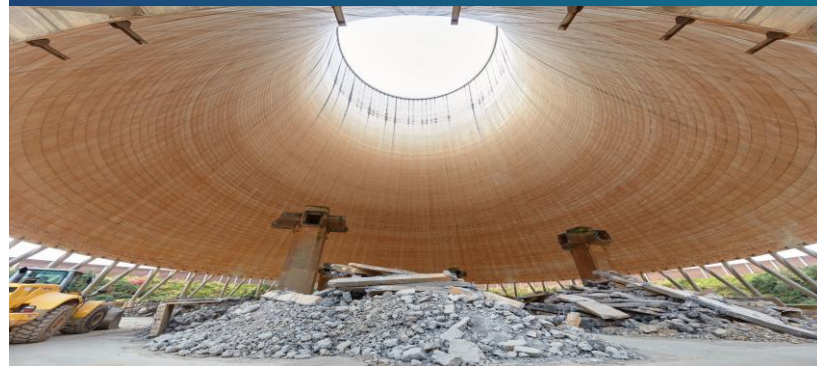
At onshore wind and solar, **>60% of replaced components were refurbished** instead of new



## Recovering materials from nuclear and coal decommissioning

Measures such as **internal reuse and recycling** are implemented

**>90% of demolition materials** are prepared for recycling, mainly steel and concrete

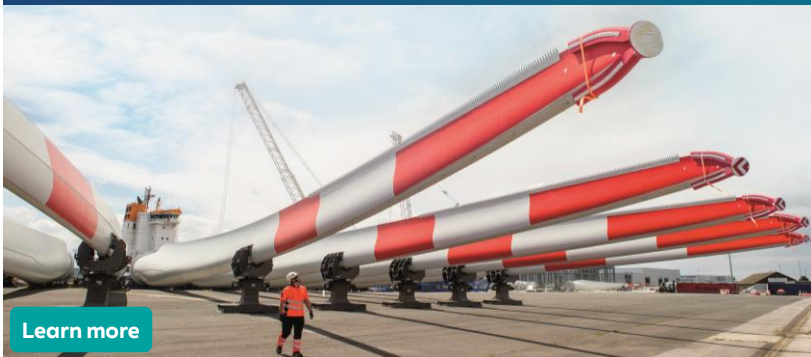


# In new asset construction, we are introducing circular innovations

## Design for recyclability

**First in the world to test Siemens Gamesa's recyclable blades** at our Kaskasi offshore wind farm

Recyclable blades are **deployed at 50 of Sofia's 100 and 40 of Thor's 72 turbines**



[Learn more](#)

Image credit: Siemens Gamesa Renewable Energy

## Reusable components

**World's first developer to reuse Circular Covers B.V.** to shield monopiles foundations

At Thor, **72 reusable monopile covers are installed during construction** and redeployed on future projects



[Learn more](#)

# We forge strategic partnerships to build a resilient and sustainable energy transition

## Joint venturing with **startups for wind waste management**

Our partner **RenerCycle** develops **circularity solutions** for onshore dismantling

At Muel, **99.9% of dismantled materials were recovered**



## Collaborating with **local solar recycling value chains**

In the USA, we have **established master service agreements with domestic PV recycling providers**

In 2025, **3,300 solar panels were recycled across our US assets**



# We have established Health & Safety as a core value in our operations, protecting our employees and contractors.

By defining H&S as a priority, we create an awareness and mindfulness culture **to prevent work-related health hazards**



[Learn more](#)

## 2025 performance:

- LTIF: 1.2 per million hours
- Fatalities (own employees): 0
- Fatalities (workers of contractors): 1



LTIF (Lost Time Injury Frequency) includes own employees and workers from contractors.. Fatalities refer to work-related accidents

# We integrate respect for human rights into our own operations and supply chain.



**To uphold ethical business practices**, we commit to international standards, such as the UN Guiding Principles and the ILO Conventions.



**To identify, prevent and mitigate violations**, we implemented a human rights risk management system and whistleblower system.



**To strengthen our impact**, we collaborate with initiatives, such as the Branchendialog and RECOSI.

**This approach enables consistent and effective management of human rights risks across our operations and projects.**

[Learn more](#)

# We leverage our teams' diversity to master our business transformation process.

## LGBT\*IQ & Friends



**1st place**  
(among German utilities)

## Global Women's Network



**3rd place**  
(in 2026)

**Chef:innen  
sache.**

**Member of  
corporate network**

[Learn more](#)

# We empower local communities through our engagement framework.

**€125 million** capital in the **RWE Foundation**



[Learn more](#)

**DemocracyTalents:** Together with Common Purpose, we help **gifted young people from low-income backgrounds unlock their potential** and develop social solidarity skills.

**>€176 million** committed into **UK community funded projects**



[Learn more](#)

**Clocaenog Fund:** Together with South Denbighshire Community Partnership, we help **rural communities access essential services** and prevent isolation.

**0.2 ct per kWh** produced at renewable energy plants in **Germany paid to municipalities**



By **sharing a part of our profits with municipalities**, we help them to invest in essential community services.

# Our work drives high performance in major sustainability ratings.

**MSCI** 

**AAA**

CCC to AAA

 **SUSTAINALYTICS**

**22.4**

100 to 0  
(0 = top mark)

**ecovadis**

**83**

0 to 100

 **CDP**  
DISCLOSURE INSIGHT ACTION

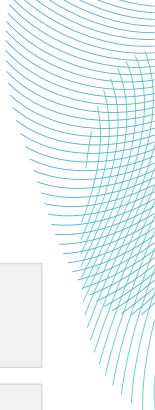
**B**







for Climate

D- to A

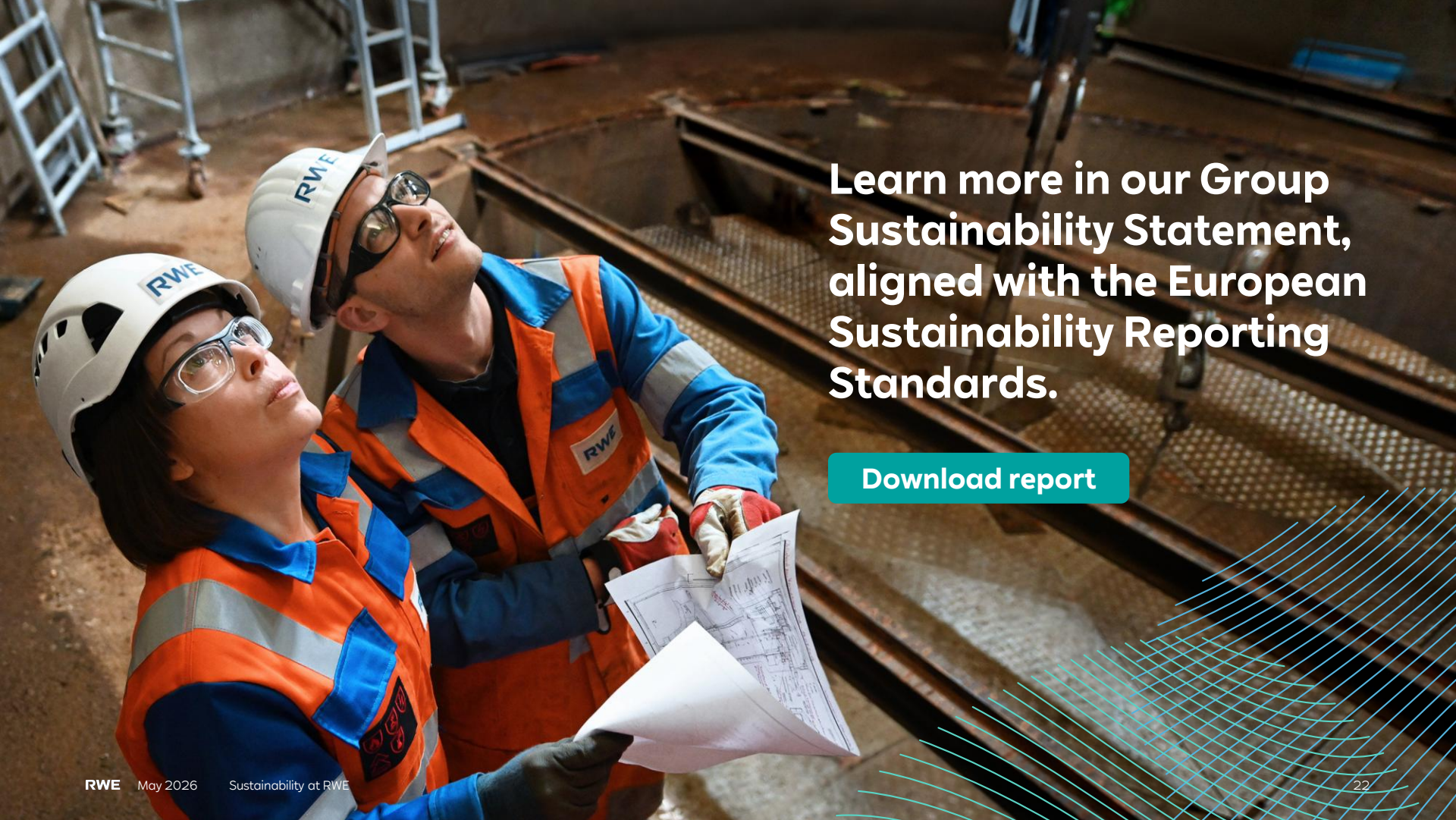
Scores shown are based on the most recent full rating assessments. All scores were published in 2025, except for MSCI (published in 2026).

# Our alliances strengthen our commitment to sustainable development.



 <b>United Nations</b> Global Compact	→ Signatory to principles on human rights, environment and anti-corruption
 <b>CARBON</b> TRUST	→ Partner in the Offshore Wind Sustainability JIP
 <b>UNEZA</b> UTILITIES FOR NET ZERO ALLIANCE	→ Founding member of Utilities for Net Zero Alliance
 <b>ocean</b> Offshore Coalition for Energy and Nature	→ Member advancing offshore renewables while protecting nature
 <b>eNG</b> COALITION	→ Founding member of the electric Natural Gas Coalition
 <b>RESPONSIBLE</b> COMMODITIES SOURCING INITIATIVE	→ Board member promoting responsible sourcing of raw materials

This is not an exhaustive list



Learn more in our Group Sustainability Statement, aligned with the European Sustainability Reporting Standards.

[Download report](#)

**RWE**

